

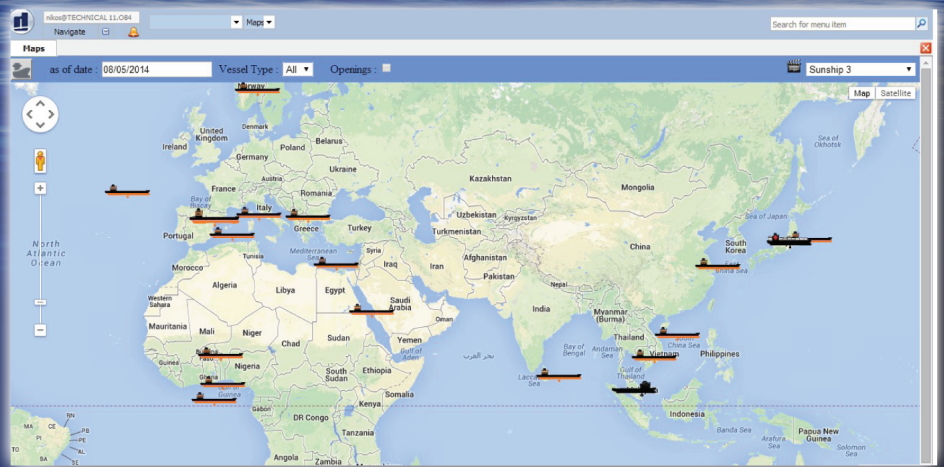
Financial & Commercial Suite

now Web based

FEATURES

- **ALL TRADES & CARGOES**
The ultimate system for Owners, Charterers, Shippers & Brokers
- **FULLY ADJUSTABLE**
To the smallest detail of your business
- **POWERFUL OPTIMIZATION**
Dynamic Decision Support on shipments, stowage, bunkers, routing, vessel trim...
- **ALL-IN-ONE SYSTEM**
Estimate to Post-Fixture to Book-keeping Investment analysis to Budget to Actuals
- **ENHANCED KPIs**
Monitor all corporate indexes, including mark to market
- **E-BUSINESS ENABLED**
Cooperate with your associates in the same system

danaos
Management Consultants S.A.



Danaos Financial & Commercial Suites

Systems aiming to optimize fleet utilization and auditing, as well as to transparently record ship operation-related revenues and expenses. Specifically designed for shipping, it fully supports all types of operations (i.e. any trade or vessel type) from start to finish (i.e. from fixture to post fixture). Embedded investment analysis tools offer insights that feed into long term budgets, which are then integrated with the actual financial position allowing for the forecasting of all financial indices.

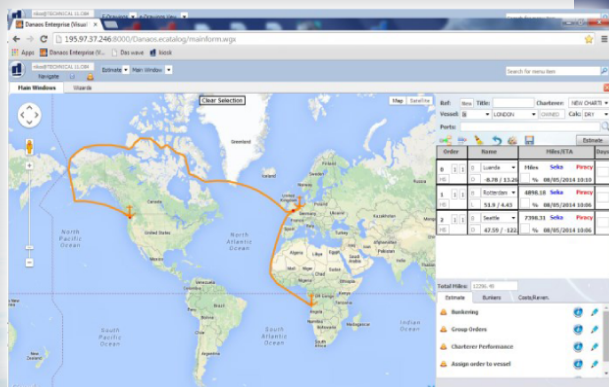
A newcomer in the assortment of Danaos's products is the Danaos Platform offering a web-based professional networking solution, enabling electronic invoicing, accounts reconciliation, sharing of results with all involved parties (clients or investors) and encouraging the collaboration with agents, brokers, suppliers etc.

Marine Accounting & M.I.S.

A financial system specifically designed for the shipping industry. Shipping, when viewed as an asset management venture, has very special requirements regarding the automation of the accounting processes to ensure an intelligible flow of credible information across departments. Designed as a multi-Company, multi-Group and multi-Currency Accounting mechanism, reporting functions allow for Consolidation throughout all the aforementioned levels. Its novel architecture enables dynamic re-definition of Charts of Accounts. The system further supports Voyage Accounting and Analysis, Running Cost Reporting as well as Cash Flow Analysis (including accruals). Fully integrated with invoice approval workflows. Meets international accounting standards and is fully SOX compliant.

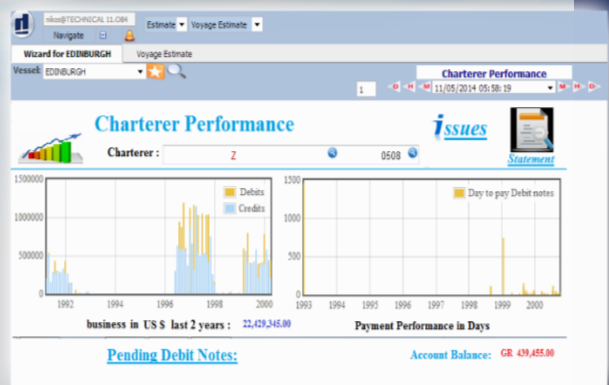
Corporate Budgeting

Multi scenario investment, fiscal years and operational (voyages, COAs, projects, etc.) budgeting system. Robust forecasting based on historical data.



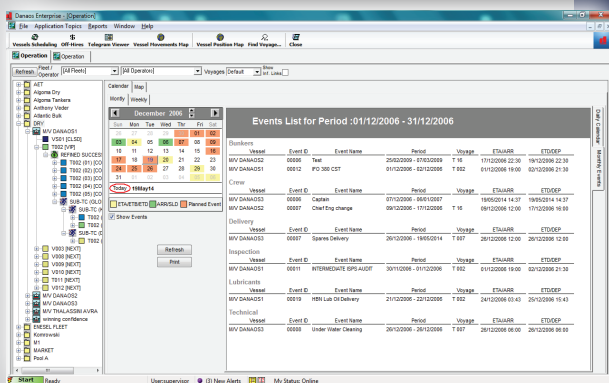
■ VOYAGE ESTIMATION & CHARTERING

Equipped with a brand new distance calculation engine, the voyage estimation module not only calculates distances from point to point, point to port, through SECA, piracy, high risk zones, etc., but also optimizes the route, bunker requirements (taking into consideration expensive low-sulfur consumption constraints), cargo and bunkers intake and stowage for best trim and performance! Fully supports all types of employment Period or Voyage In and Out, COAs, full or partial load including unitized cargoes like cars, pallets or containers. Optimized cargo booking & grouping. Supports options and what-if scenarios. Updates the budgets to facilitate post-fixture follow-up. Mark-to-market, mark-to-investment options available.



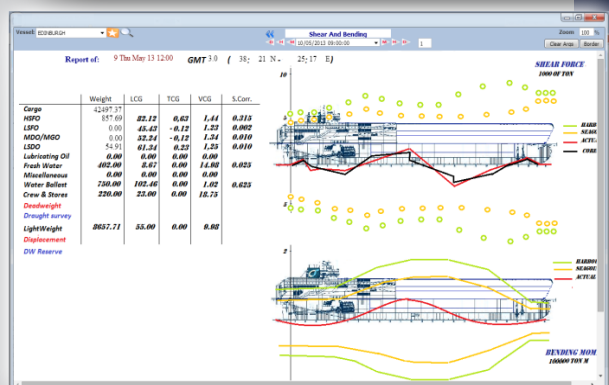
■ VESSEL OPERATION & SCHEDULING

Performance monitoring in technical, financial & statutory (EEOI, MRV, etc.) terms. Advanced optimization of the actual voyage in terms of optimal weather routing (based on the specific hydrodynamic characteristics, engine & propeller) for bunkering activities taking into account deviations, port rotation, etc. Complete movements reporting with charter party over/under performance evaluation. Voyage financial reports and post voyage analysis. Integrates with Waves Fleet Performance monitoring system to benchmark actual vessel performance in terms of speed, fuel, time, lubes, etc. Fully integrated with stowage planning and trim optimization.



■ FREIGHT COLLECTION

Creates charterers Debit & Credit Notes ensuring that all account items are included, records the charterer's payments, reconciles commission invoices and finally updates the books as well as keeping track of voyage revenues, expenses and disputed items.



■ PORT EXPENSES

Records port expenses from the initial offer and pro-forma invoices to revised or additional offers, to the final invoice. Updates accounting, thus consolidating the payment of the DA through the corporate Payment system. Interfaces with Agent systems.

■ PAYMENTS

Automates the planning and the process of fund transfers for the outstanding payables, partial payments, on account payments and bank transfers. Supports most of the current e-banking systems.