

YOUR Gateway to e-commerce and e-purchasing

The *danaos*SUPPLY system consists of three modules, SPARES, STORES and PROVISIONS. Each one has been optimised for the specific task and reporting requirements. The SPARES module is integrated with the *danaos*PMS system and all modules are integrated with the Marine Accounting & Management Information System (MIS).

PRODUCTIVITY AND COST OPTIMIZATION

*danaos*SUPPLY system has been conceived to minimise cost through complete supply cycle support, efficient evaluation of requisitions, comparison of quotations, order break up strategies, historic cost references and order follow-up to destination. Productivity is enhanced by the paperless distribution of all produced legal documents to suppliers.

E-COMMERCE

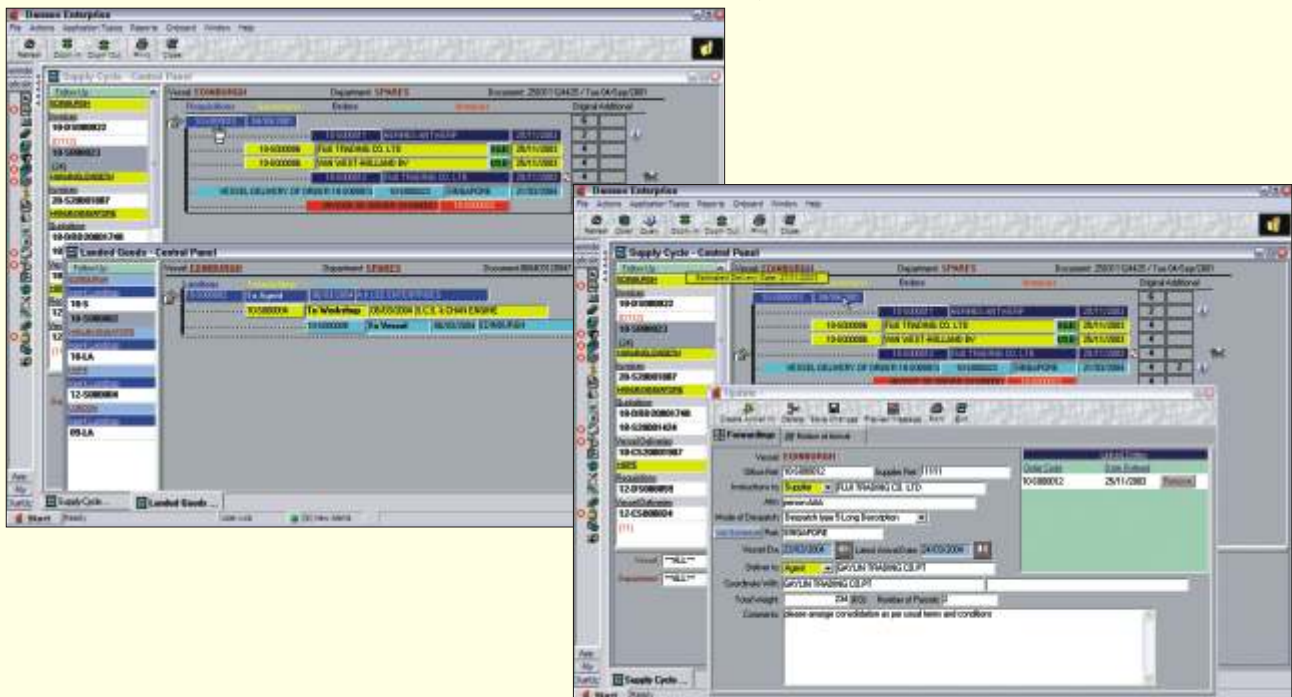
All *danaos*SUPPLY modules generate

quotations via the Internet which once received by the supplier are filled in and reprocessed via the *danaos* web-site. The user then gets a paperless quotation fully compatible with *danaos*SUPPLY, ready for evaluation without the slightest data transcription. Further the suppliers library at the Danaos Web-site, makes *danaos* your supply reference database.

ON BOARD

*danaos*SUPPLY modules have been designed for multifunctional role. They can be used as stand-alone on board systems (*), as stand-alone office systems with paper exchanges or in a fully integrated mode, where office and vessel work in a synchronised mode and data is shared and exchanged. All this is performed with sophisticated update strategies that transfer every time only the alterations, minimising data transfer and cost.

(* Requires also *danaos*ONBOARD module



Visit our Web site at danaos.gr

Your "all in one" Partner...

The Integrated Provisions Control System

danaosPROVISIONS is a module of the **danaosSUPPLY** system. Apart from sharing all the system philosophy and benefits, it has been adapted to the requirements of ship provisions.

THE PROVISIONS GROUP PHILOSOPHY
PROVISIONS differ from the other supply modules in that, quite a few items are interchangeable within groups and in this respect supplier comparisons can be easily affected, even if very rarely, two suppliers will offer identical items due to availability. On the other hand geographical distribution of orders is made possible by analysing historic supplier data.

EVALUATION PRECISION
The **danaosPROVISIONS** module is using reporting specific to Provisions. Items like cost per manday, reference price based consumption, evaluating catering department performance, are included in the module.

ACCURACY and COST REDUCTION

The large number of Provision items, render the use of an efficient paperless system a necessity. Combined with the Web quotation capabilities gives another dimension to low cost (cost effectiveness), easy and efficient supply to your fleet onboard and ashore.

Features of **danaosPROVISIONS** include:

- ◆ Complete Supply Cycle Support
- ◆ Historic Information Management
- ◆ No data transcription
- ◆ On-board module
- ◆ Web Support services
- ◆ User friendly graphical interface
- ◆ Budgeting and Cost Control
- ◆ Integration with **danaosMIS**
- ◆ System Modeling

The screenshot displays the Danaos Enterprise software interface. The top window is titled 'Supply Cycle - Control Panel' and shows a list of invoices and orders for a vessel named 'EDINBURGH'. Below this, there is a 'Vessel Inventory / Value' window showing a table of inventory items with columns for Date, Qty Unit, (FIFO), (LIFO), and (AVG) REPL COST. The table lists various items like BEEF ROUNDS, BEEF LOINS, and BEEF LIVE. A third window, 'Item Vessel Inventory / Value Details', provides a detailed view of a specific item, including its delivery history and price information.

Date	Qty Unit	(FIFO)	(LIFO)	(AVG) REPL COST
30/11/1998	0 KG	0.00	0.00	0.00
06/09/2000	335 KG	810.45		812.78
06/09/2000	95 KG	296.85		297.90

Visit our Web site at danaos.gr

Your "all in one" Partner...